

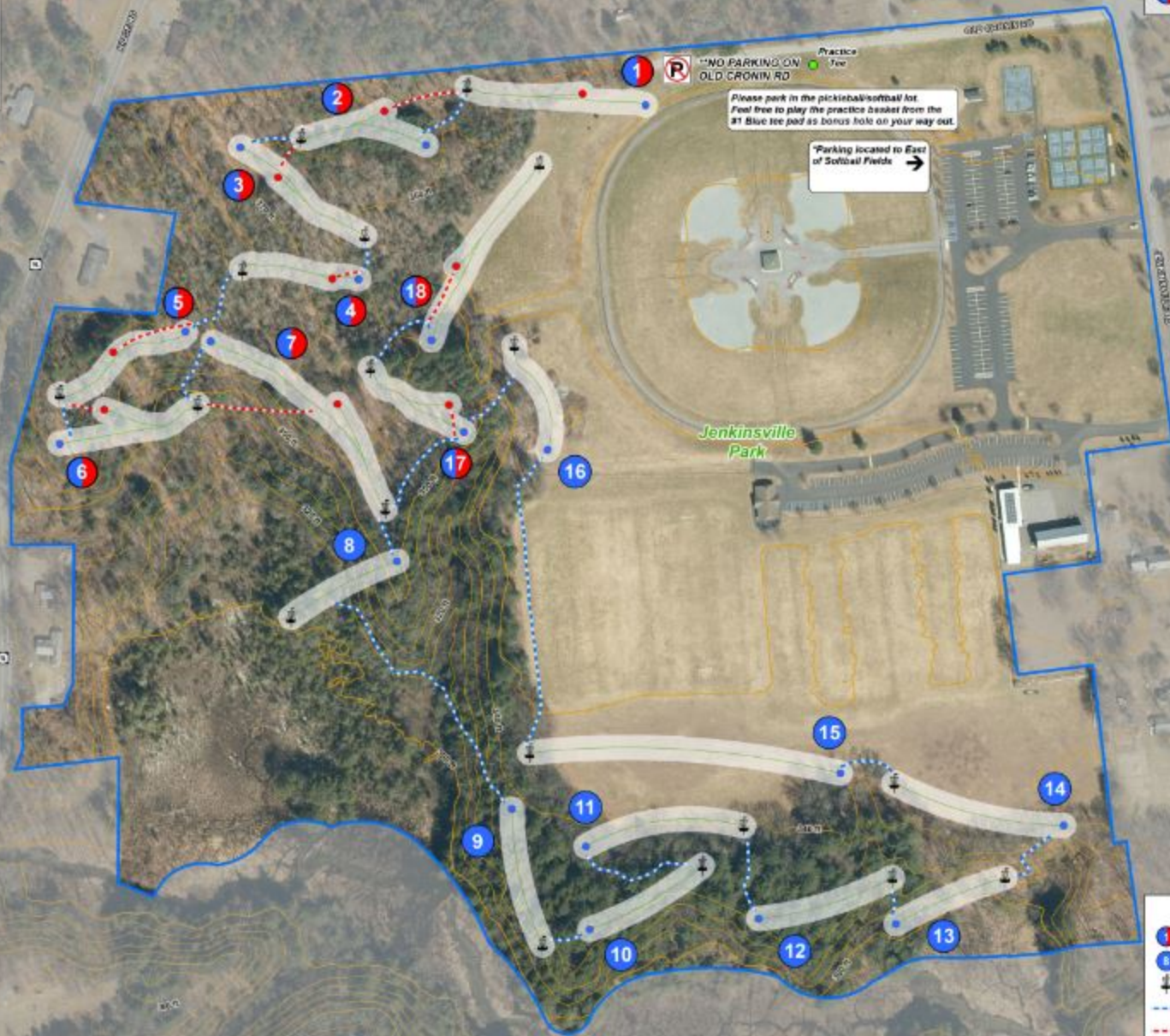
# Jenkinsville Park Disc Golf Map



0 100 200 300 400 Feet

Map Produced by 5/22/20 11/2020

1 8 Tee/Fairway Numbers



Please park in the pickleball/softball lot. Feel free to play the practice basket from the #1 Blue Tee pad as bonus hole on your way out.

\*Parking located to East of Softball Fields →

NO PARKING ON OLD CROWN RD

Practice Tee

### Legend

- Blue/Red Tee \* Red/Blue #17 and #18 also play as #8 and #9 tee boxes
- Blue Tee
- Disc Basket
- Fairway Connector Paths (Blue Tees)
- Fairway Connector Paths (Red Tees)

This map was produced by the town of Gainesville and is intended for GENERAL INFORMATION PURPOSES ONLY. Sources: Other imagery provided by NIS GIS Clearinghouse. Contours provided by NYS GIS Clearinghouse.

\*Copyright Internal 2020